

Seminole County Sheriff's Office

Part I Crimes

09/01/09 - 09/30/09

Regions

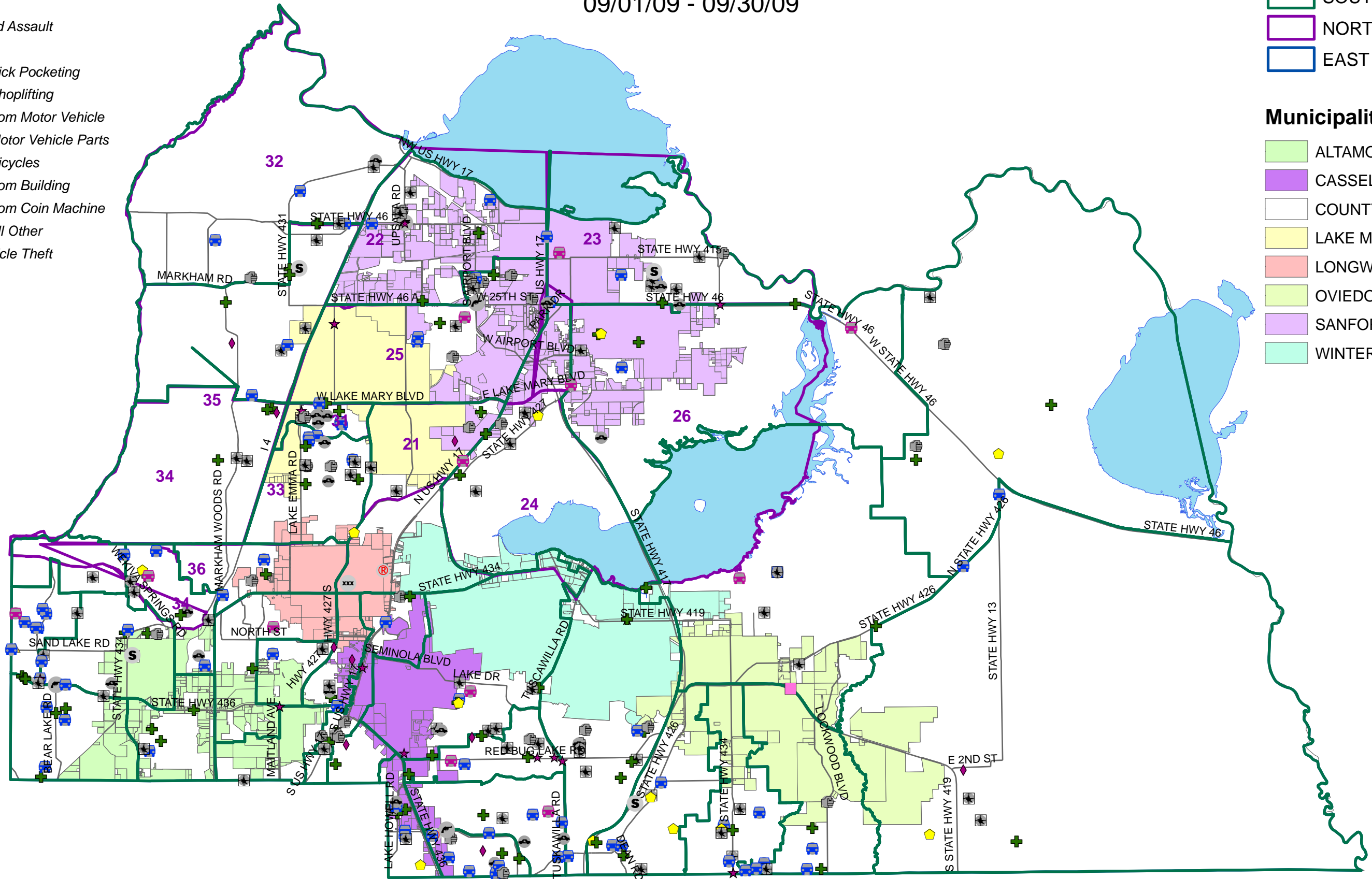
- SOUTH REGION
- NORTH REGION
- EAST REGION

Municipalities

- ALTAMONTE SPRINGS
- CASSELBERRY
- COUNTY
- LAKE MARY
- LONGWOOD
- OVIEDO
- SANFORD
- WINTER SPRINGS

Part I Crimes

- 110A *Forcible Rape*
- 110B *Forcible Sodomy*
- 110C *Forcible Fondling*
- 1200 *Robbery*
- 130A *Aggravated Assault*
- 2200 *Burglary*
- 230A *Larceny, Pick Pocketing*
- 230C *Larceny, Shoplifting*
- 230D *Larceny, from Motor Vehicle*
- 230E *Larceny, Motor Vehicle Parts*
- 230F *Larceny, Bicycles*
- 230G *Larceny, from Building*
- 230H *Larceny, from Coin Machine*
- 230I *Larceny, All Other*
- 2400 *Motor Vehicle Theft*



Prepared by:
Crime Analysis and Research
Created: 10/02/09